

**TRAVEL
LIFE
SOLVED**

**ENJOY
ADVENTURE**
COMPOST TOILET SYSTEM



ORIGIN^{COO}

We are committed to providing excellent customer support and are here to help you with any questions or concerns you may have about our product.



Share your journey with us.



ORIGIN^{O3O}

Thank you for your
purchase of the



NORTH BALTIMORE, OHIO 45872, UNITED STATES

Each unit is 100% inspected before leaving our facility to ensure you are receiving the highest quality!

Resource Center	3
What's in the Box?	4
Warranty	6
Unit Parts	9
Power Components	11
Connect to Power	13
Wire Diagram	16
Troubleshooting	17
Floor Installation	18
Ventilation Options	20
Solid Waste Management	21
Compost Mediums	22
Urine Waste Management	23
Unit Maintenance	25

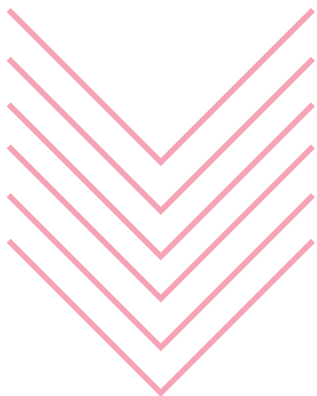
sales@ogotoilet.com | 567.271.2020 | ogotoilet.com



NEED HELP?

We're here for you.

PLEASE READ ENTIRE MANUAL BEFORE OPERATION



[LEARN.OGOTOILET.COM](https://www.learn.ogotoilet.com)

RESOURCE CENTER

GUIDES. FAQ. TIPS. MORE

12VDC POWER CABLE
INSTALLATION SCREWS
SANITARY SPRAY BOTTLE
URINE BOTTLE CAP
VENT HOSE (5ft/ 1.524 m)

WHAT'S IN THE BOX

ADDITIONAL ACCESSORIES MAY BE REQUIRED

This product is direct wired 12VDC, 5A. The product may also be used with an NRTL approved power adapter for 110VAC supply (not included)

INDOOR USE ONLY | POUR
USAGE INTÉRIEUR
SEULEMENT

TEMPERATURE RANGE: -15°C
TO 60°C (5°F TO 140°F)

ALTITUDE RANGE: ≤ 2000M

NOT INTENDED IN WET
LOCATIONS | NON DESTINÉ
AUX ENDROITS HUMIDES



OGOTOILET.COM

NEVER RUN OUT

OF COMPOST MEDIUM.

WE ARE PROUD
TO FOLLOW
INDUSTRY STANDARDS



WE OFFER A STANDARD **THREE (3) YEAR** WARRANTY ON ALL COMPONENTS.

These warranties do not apply to incorrect use or if the customer has damaged or altered the product in some way. If you have any questions regarding spare parts or warranty, please reach out to us at

sales@ogotoilet.com



A QUICK NOTE

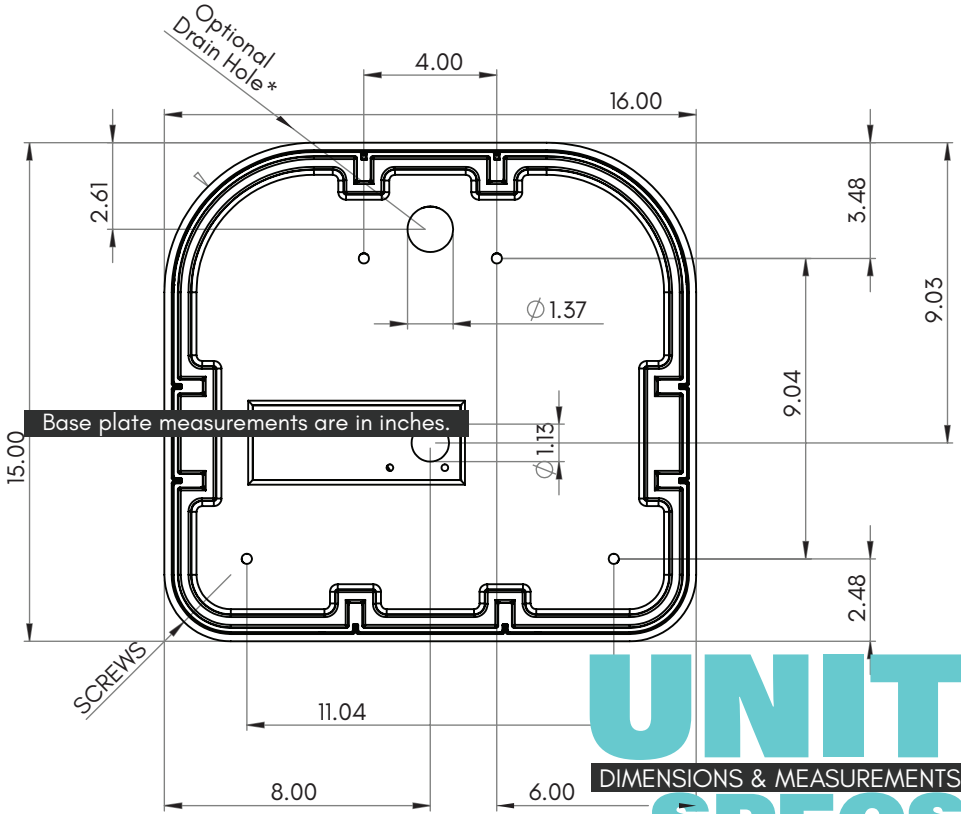


NEED HELP?

We're here for you.

[LEARN.OGOTOILET.COM](https://www.learn.ogotoilet.com)

Please do not hesitate to contact us with questions or concerns. We recommend consulting with a professional in your area before installation of this product. While we are available to provide advice, ultimately the best course of action for your build and lifestyle is up to you.



UNIT

DIMENSIONS & MEASUREMENTS

SPECS



18.375"
HEIGHT

15.00"
DEPTH

16.00"
WIDTH

UNIT PARTS

1. Pull Handle
2. Urine Bottle
3. Solids Bin
4. Drawer Latches
5. Vent Housing
6. Liquid Level Sensor
7. Power Agitator
8. Fan Housing
9. Drain Pan
10. Intake Filter
11. Power Button/Indicator
12. Liquid Drain Area
13. Drawer
14. Toilet Bowl
15. Bottle Cap



UNIT WEIGHT

28lbs/12.7Kg

SOLIDS BIN

25-30 uses

URINE BOTTLE

2.4 gal/9.08 L

PULL HANDLE TRAP DOOR SYSTEM

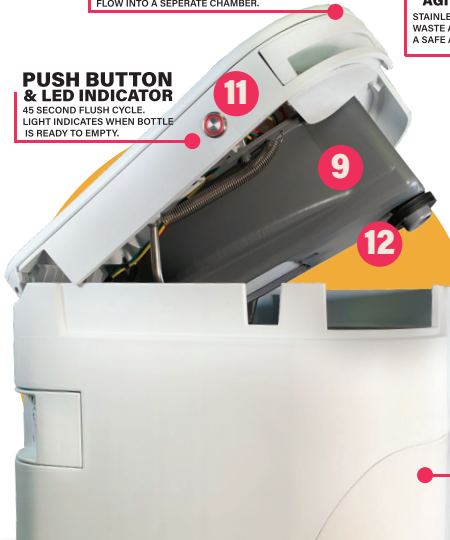
PATENTED URINE DIVERSION TECHNOLOGY. SEALED DRAIN PAN ENSURES LIQUIDS FLOW INTO A SEPERATE CHAMBER.

PUSH BUTTON & LED INDICATOR

45 SECOND FLUSH CYCLE. LIGHT INDICATES WHEN BOTTLE IS READY TO EMPTY.

12V DC POWER AGITATION SYSTEM

STAINLESS STEEL AGITATION MIXES SOLID WASTE AND COMPOST MEDIUM ALLOWING A SAFE AND ODOR FREE TOILET.



SPECS & BASIC INFO

POWER



VOLTAGE RANGE
12VDC INPUT
DC12V --- 5A, 60W

Always disconnect the power source before performing any maintenance or repairs on the electrical components of this product. Failure to follow this warning can result in serious injury or death from electric shock.

 12 VOLT DC POWER

 AUTOMATIC START

 45 SECOND CYCLE

 5AMP RATING / 1.8 AMP AVG. DRAW

SGS

MOTOR SPECS

 CAUTION



COMPONENTS

POWER

PUSH ONCE TO **START** MOTOR

PUSH AGAIN TO **STOP** MOTOR



RED LIGHT* = LIQUID BOTTLE FULL

*the light should be off when bottle is not full.



HOW TO USE THE POWER BUTTON

When pushed to start the motor will run for 45 second cycle. Motor will stop automatically after. Keep hands away from agitator arms when motor is running.



VENTILATION FAN SPECS



- CONTINUOUS RUN
- 20 mA RATING
- 0.48 Ah/DAY
- 6.5 CFM RATING



PLEASE READ

ALL SAFETY INSTRUCTIONS CAREFULLY BEFORE USE.

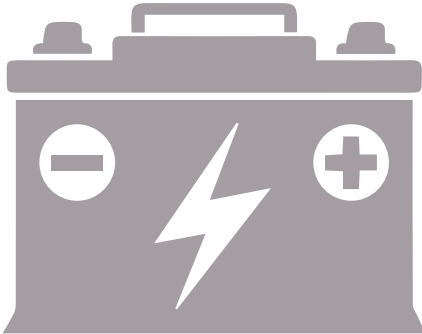
VOLTAGE RANGE: 12VDC

INPUT DC12V --- 5A,60W



THE MANUFACTURER IS NOT RESPONSIBLE for any personal injury or other damages occurring as a result of faulty installation or improper use. Please save this manual for your reference.

Never run power cord over hot surfaces or sharp edges. Ensure power cable and connections are correct before operating.



CONSULT MANUFACTURER OR PROFESSIONAL FOR QUESTIONS REGARDING ELECTRICAL CONCERNS, COMMENTS, OR QUESTIONS.

Our instructions are recommended for a deep cell battery or other 12VDC systems.

NEVER USE A DAMAGED POWER CORD OR PLUG.

POWER

OPTIONS

STEPS TO CONNECT

Ensure your power source works properly.

Remove about a half inch of insulation from both wires. Depending on your power source you may need to insert wires into a connector or clamp.

ENSURE THEY ARE SECURE. CHECK YOUR POWER SOURCE'S MANUAL FOR FULL WIRE CONNECTION INSTRUCTIONS.

Attach the **RED (+)** wire to the positive terminal of the battery. Attach the **BLACK(-)** wire to the negative terminal. Plug the cable into the unit. Your unit should now be ready to use.

STEP 1: CHECK POWER

STEP 2: STRIP WIRES

STEP 3: CONNECT TERMINALS

STEP 4: CONNECT POSITIVE

STEP 5: CONNECT NEGATIVE

STEP 6: PLUG IN UNIT



*12V DC BATTERY NOT INCLUDED

QUICK INSTALLATION

SKIP THE TOOLS AND PLUG
DIRECTLY INTO WALL OUTLET*.



110V AC

POWER ADAPTER

110V AC POWER ADAPTER AVAILABLE FOR PURCHASE

OGOTOILET.COM

*AVAILABLE FOR PURCHASE IN THE UNITED STATES

NOT WORKING?

WE GOT YOU COVERED, NO NEED
TO WORRY.



SIMPLE

TROUBLESHOOTING

MANY TIMES THE ISSUE IS

SOMETHING SIMPLE. LOOSE WIRE?

POWER SOURCE CHARGED?

CORRECT POLARITY?

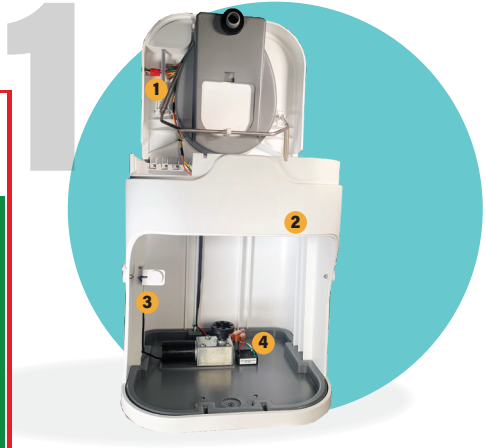
DIAGRAM

BUTTON



WIRE COLOR KEY

- YELLOW WIRE = SENSOR OUTPUT TRIGGER
- WHITE WIRE = MOTOR OUTPUT +12 POSITIVE
- RED WIRE = +12 POSITIVE
- BLUE & BLACK WIRE = GROUND
- GREEN WIRE = MOTOR INPUT TRIGGER



URINE SENSOR

3

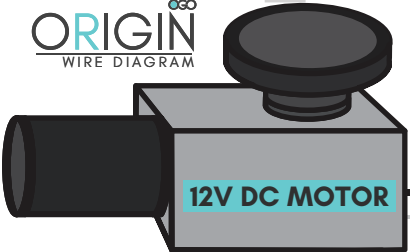


FAN HOUSING

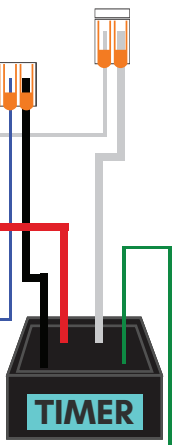
POWER JACK

2

ORIGIN
WIRE DIAGRAM



12V DC MOTOR



4

TIMER

The fan runs continuously, making it a great indicator that you have correctly installed your unit.

QUICK HELP

IF THERE IS A PROBLEM, WE ARE HERE TO HELP WITH A SOLUTION.

The standard fan is quiet and sometimes is mistaken for not working.

IS YOUR FAN RUNNING?

Place your hand on the fan housing and feel the vibrations. If there is no power, use the wire diagram and check all wire connections. Hey, It happens, **sometimes wires come loose in shipping.** Lift up the WAGO clip lever to release the wire. Twist and smooth the copper wire and firmly push back into the clip and close lever. Repeat for all wires.

ARE WIRES CONNECTED?

A low charged power source or low current supply can result in limited function.



DOES THE AGITATOR SPIN ?

Your power source needs to have 12 volts available and 10 amps when motor is engaged. If you are getting the correct power, but the arms are not spinning, double check cogs on the bottom of solids bin and motor. They will need to have proper connection to work.

REMEMBER, WE ARE HERE IF YOU HAVE QUESTIONS.

TROUBLESHOOTING QUICK CHECK

Once your power source has been determined, your unit is ready to install. Remove all tape and packaging. Remove urine bottle and solids bin from the unit to access the mounting. **SEE PAGE 8 "MOUNT/INSTALL" FOR**

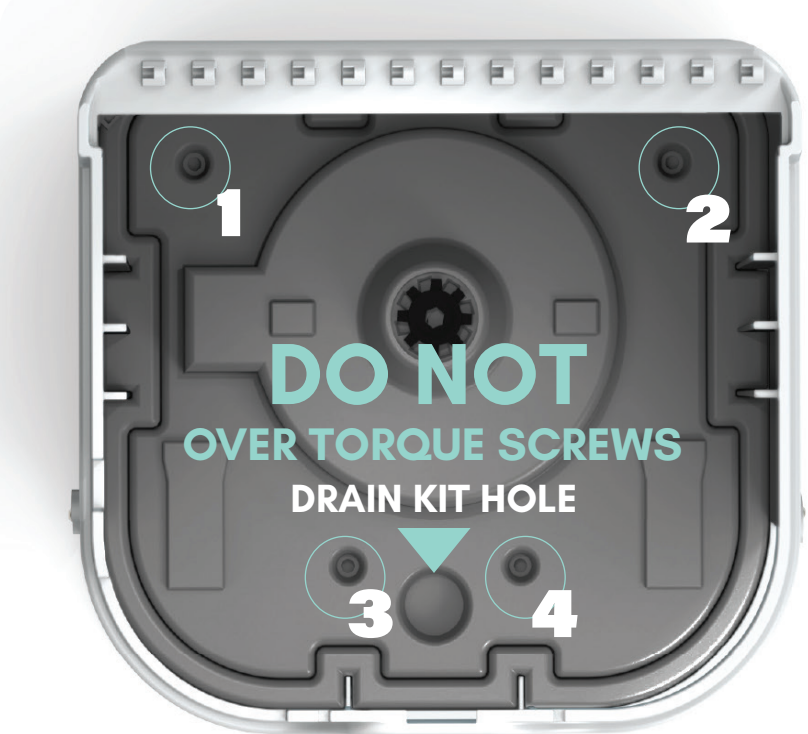
DRILL MEASUREMENTS AND UNITS DIMENSIONS

The pack out bag that contains the stainless steel screws is located in the solids bin.

Using a screwdriver and/or drill proceed to secure your unit in the four mounting holes.

MOUNT/ INSTALL THE FLOOR

If installing a drain kit, use a utility knife and remove plastic from the marked area.



ENSURE PROPER VENTILATION

Each unit comes with an optional vent hose. Your venting plan needs to consider two crucial factors: Moisture Control & Adequate Airflow.

FREEDOM TO CHOOSE!

How you vent is up to you.

OPTION ONE: Use vent hose (included) and attach to existing vent system or attach to an exterior shell vent.

OPTION TWO: Use charcoal filters in the t-bar instead of using the hose. A higher CFM fan may be needed to ensure adequate airflow.



*sold separately

When venting outside, it's essential to safeguard against insects and environmental elements.

Our custom shell vent protects against the elements with an outer shell and interior filter.

Cut a hole and use a 1-1/4" PVC pipe to connect the shell vent to the hose.



The unit may be vented vertically through the roof, or most common horizontally through the wall, or down through the floor.



NEED HELP?

We're here for you.

LEARN.OGOTOILET.COM

FILTER OPTIONS

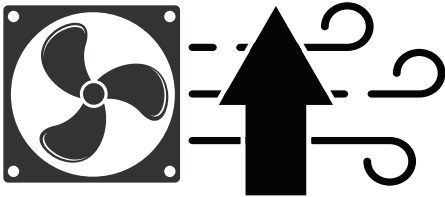
Activated charcoal effectively traps and neutralizes odors, making it ideal for tackling urine smells in environments like boats.



For optimal results, pair with a **High CFM Fan** to ensure consistent airflow. These filters are invaluable for



HIGH SPEED



units operating without vent hoses in open spaces with adequate ventilation.

CREATE A SOLID

SOLUTION

During the compost process, microbes produce heat, creating condensation. Humid environments, high elevation, and other factors can work against ideal conditions. **A high CFM fan** is louder, but more airflow ensures a proper mix.

GET TO KNOW SOLIDS BIN

Place compost mixture in a compost friendly bag. Place bag in a proper receptical.

Depending on heat, airflow, and agitation it will take 6-12 months to reach a full nitrate rich compost.

The compost process finishes outside the unit. Until it is complete, use precautions while handling. Check local guidelines for disposal.



Never place your hand in the solids bin while motor is running. Never place cigarettes or matches in solids bin.

Start by mixing the medium with water and agitate. Add water gradually. Too much or too little will affect absorbency. Mixture should feel like lightly moist earth.



Drier medium tends to last longer, especially in humid conditions.



These mediums contain critical microbes that when introduced to solid waste will begin to activate.

Properly preparing your medium is crucial for proper function.

COMPOST MEDIUM

WE SUGGEST COCO COIR

Start an agitation cycle, mix one bag with 8oz - 16oz water.

MORE ABOUT COMPOST MEDIUMS

Avoid use of other popular compost mediums such as sawdust, wood ash, and litter. These become too dense and can damage the agitator system, voiding the warranty.

Shagnum peat moss is another good choice for compost medium.



Vacuum Sealed
24oz Pre-Moistened
Coco Coir.
Change every 25-30 uses.

WATCH ON YOUTUBE

MANAGE WASTE

LIQUIDS



LEAN FORWARD. DO NOT LIFT BOWL AFTER USE

The urine bottle will hold 2.4 gallons (9.08 L).

The liquid sensor will activate as a warning when the level becomes 85% full.

Use the provided sanitary spray bottle after each use to disinfect the surface.

SUGGESTED MIXTURES

1:1 ratio

water & vinegar for disinfecting.

1:5 ratio

liquid dish soap & water for cleaning

Follow local guidelines when emptying.



URINATION

WASTE DRAIN SYSTEM

To remove the urine bottle from the unit, unlatch the side hooks and remove the drawer.

Place the bottle cap on the full bottle and remove by the bottle handle.

The red **indicator light** should only be **on** when liquid has reached the sensor's height. The light should be **off** if liquid levels are below the sensor.

If the indicator light is not working correctly, check our **resource center** for information on calibrating the sensitivity of the sensor.

A drain kit can be used to eliminate the usage of a urine bottle. The urine can be diverted to grey or black tank.

SKIP THE URINE BOTTLE

MAKES THE COMPOST TOILET
EVEN BETTER.



WANT TO SKIP THE **URINE BOTTLE**

OGO™ Drain Kit



Effective Urine Diversion:

Safely directs urine away from the toilet,
eliminating the need for a bottle.

Versatile Use:

Suitable for a range of environments, from
remote locations to boats, and compatible
with existing septic systems.

Cost-Effective:

Avoids the high costs associated with
septic or marine head systems.

It is a toilet after all. We suggest weekly cleaning along with after use disinfecting. How you clean is up to you, but we have some tips.



TO KEEP THE BOTTLE CLEAN, USE LEMISHINE®. FOR URINE ODOR AND SCALING.



TIPS TO KEEP IT

CLEAN

PROPER MAINTENANCE IS ESSENTIAL TO KEEP UNIT IN OPTIMAL CONDITION.

PREVENT MOLD

Small amounts of white mold in not abnormal. Usually a result of too much moisture. Larger amounts may need steps for better moisture control and through cleaning.

URINE SCALING

Urine scale can be an unpleasant and stubborn problem. Hot soapy water will help remove scale. We recommend using **lemishine** once a month.

PREVENT BUGS

Diatomaceous earth is used to help prevent flies from becoming an annoyance in composting toilets. It creates a sharp habitat that fly larvae can't survive in.

USE SWABS

Cotton swabs can help reach small spaces. Using once a month can help keep moving parts free of debris.

PROTECT YOUR UNIT IN A **WET BATH**

Having a shower/ toilet combo is a great way to save space. Ensure there is adequate airflow and moisture control for your compost toilet to work properly. Install on a raised platform and cover when shower is in use to prevent water from gathering under the unit.



**TRAVEL
LIFE
SOLVED**

**ENJOY
ADVENTURE**