

URINE DRAIN DIVERSION KIT

QUICK INSTALLATION GUIDE

The OGO™ ORIGIN offers flexible waste management options. Easily bypass the urine bottle and divert liquid waste directly to your existing waste tank or system.

1

FIRST STEP IS TO **MAKE A PLAN**



Installing an OGO™ Drain Kit is quite simple with the right preparation and is designed to be able to be removed at anytime for cleaning or switching back to the bottle.

YOU WILL NEED:

- Utility Knife
- PVC Glue (optional)
- Phillips Screw Driver
- Additional Piping or Hoses

2

PREPARE YOUR **BASE PLATE**

Open the drawer and remove components. You will need to remove the cone insert that covers the motor to access the base plate. Use a utility knife to cut around the molded circle, applying enough pressure to cut through the plastic. Remove each section and trim any excess. For easier access, turn the unit on its side.

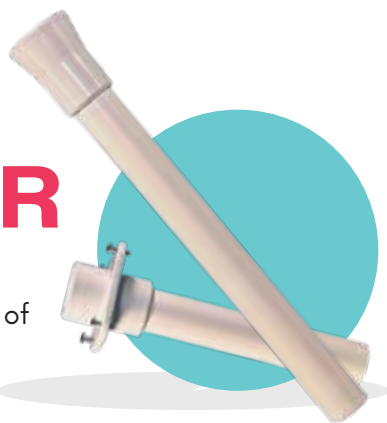


3 ATTACH THE BASE ADAPTER

After cutting the hole, set the unit upright and place the cone insert back over the motor. Screw the base adapter of the drain kit into the cone insert.

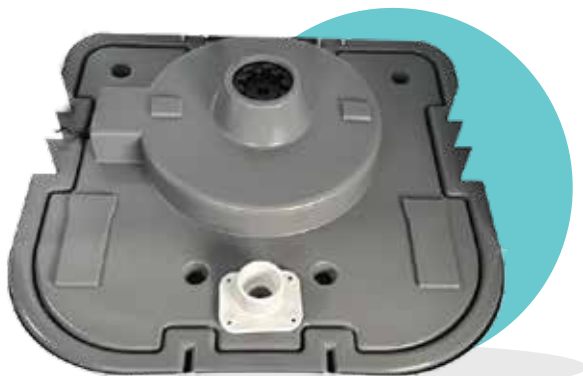
If using PVC glue, allow it to cure before securing the drain kit in place. However, we recommend not gluing all four pieces together. Instead, create two separate sections for easier removal and cleaning

To connect the drain kit to your waste system, we provide a small PVC stud (small PVC pipe). The type of pipe or hose needed will depend on your specific setup, so be sure to check your waste system's specifications. We are using a $\frac{3}{4}$ " PVC pipe, while the outer diameter (OD) of the drain stem is $1\frac{1}{4}$ ". You may need additional piping or adapters to ensure a proper fit. Make sure all connections are secure to prevent leaks.



Small PVC + Base Adapter
Large PVC + Drain Flange

This setup allows for easy disassembly when needed.



4 ATTACH THE DRAIN FLANGE

After securing the base adapter and connecting the pipes to your waste system, install the OGO™ ORIGIN onto the floor using the provided screws.



To check for leaks, pour water through the system and ensure a secure flow. Once confirmed, attach the large PVC pipe to the drain flange. The large pipe should fit snugly into the base adapter, while the flange is designed to sit around the drain pan's funnel.

Depending on your setup, you may need to remove the black seal to allow the bowl to close securely with the flange in place.

Visit OGOTOILET.COM